



## Health and Social Care Integration Pioneers: Leeds

**Our Vision:**  
Leeds will be a healthy and caring city for all ages, where people who are the poorest will improve their health the fastest  
Leeds JHWS 2013




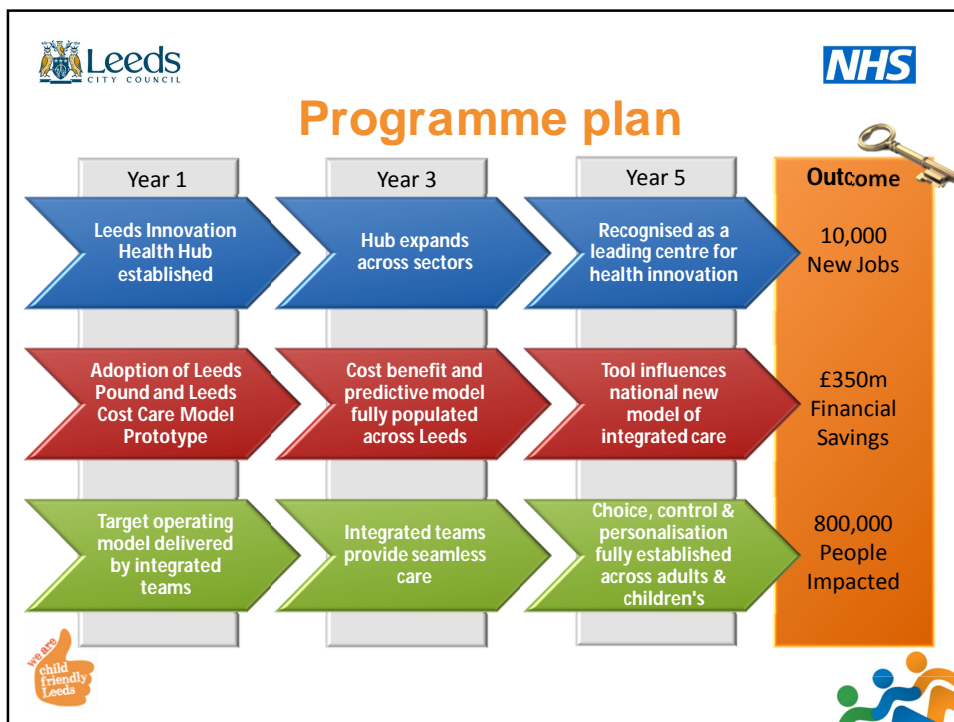
 

## Aims and objectives



Improving quality of experience:  
Innovate - Commission - Deliver







## Impact on the care of individuals

There are no gaps in my care

I want to do the same as everyone else, and only have to talk to one person

I didn't have to wait in all day for lots of different people to come at different times

I am fully involved in the decisions and know what is in my care plan

*"My care is planned with people who work together to understand me and my carer(s), put me in control, co-ordinate and deliver services to achieve my best outcomes"*

It is less time consuming if all services are together in one place

The team always talk to each other to get the best care for my son

I always knew who was in charge of my care and who to contact

I don't have to keep repeating myself to lots of different people







## Measuring success



Evolutive



Care Trak



Outcomes Framework





**Leeds** CITY COUNCIL **NHS**

## Working together with impact

- Interface Geriatrician
- Early Start
- South Leeds Independence Centre
- Single Point of Urgent Referral / Contact
- Information Governance/ Care Records
- Neighbourhood Networks
- Neighbourhood Integrated Teams
- Leeds Directory

**We are child friendly Leeds**

**Leeds** CITY COUNCIL **NHS**

## Contextual factors

**Leeds Unique Assets**

population, patients, carers, families, communities

Academic institutions and Third sector

Local government

Private sector

Local health and social care commissioning and delivery organisations

National bodies headquartered in Leeds

**We are child friendly Leeds**